

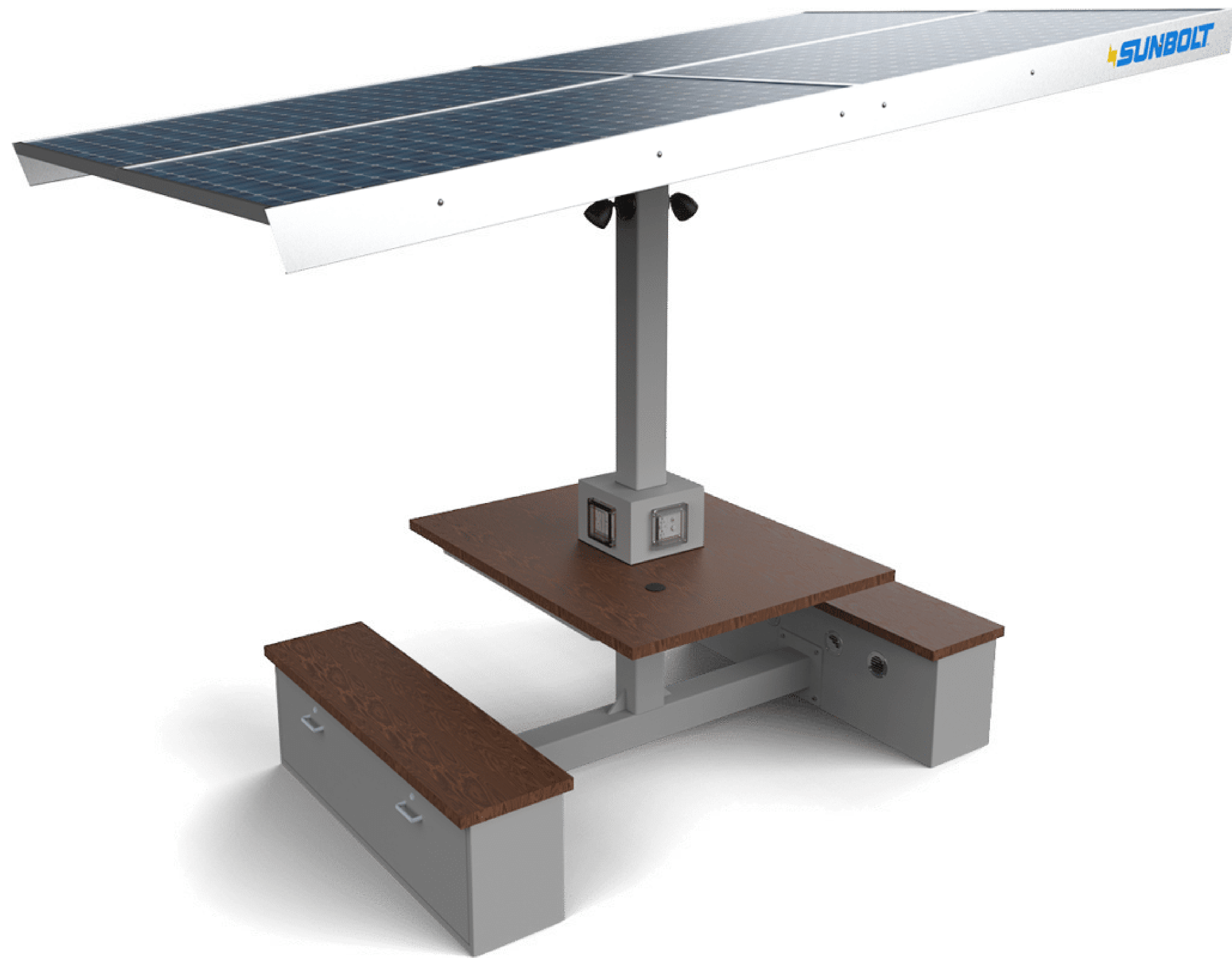


— Product Catalog —



Solar Workstations

Sunbolt Solar Workstations are engineered with the highest solar power output, providing superior off-grid autonomy, and charging performance. Equipped with multiple charging outlets and high-capacity battery banks, these are ideal outdoor site amenities for charging cell phones, tablets, laptops, and other mobile devices.



130 MPH wind rating. Attached benches. Seats 2-4. ADA Accessible. Six 120V outlets and five dual port USB/USB-C outlets. Two Qi wireless chargers. Material types are Ipe Wood or Recycled Plastic Lumber for tabletops and benches. Grounding electrode required. Four solar panel canopy. 1.3 kW Solar Array.

CampusXL®

Sunbolt's best-selling workstation is perfect for studying, socializing, and keeping everyone in charge. Equipped with 6 120V, 10 USB ports, 2 Qi wireless chargers and two attached benches, the CampusXL is a powerful hub that is sure to make a statement on campus. It is built with the highest solar output on the market and fully customizable to add your schools mascot or logo.

Model Number	Model Description	Weight	Dimensions	Recycled Plastic Lumber Color Options
SNB-CXL-RPL	CampusXL with Recycled Plastic Lumber tabletop and benches	1,450 lbs	<ul style="list-style-type: none"> • Canopy height (high side): 8'3 1/2" • Canopy head clearance height (low side): 6'11 3/4" • Bench seat (1): 4'6" W x 1'21/2" L • Bench footprint (1): 4'6" W x 1'0" L • Table top: 4'6" W x 3'6" L • Table footprint (with benches): 4'6" W x 7'0" L • Canopy: 6'7" W x 11'0" L 	Gray, Cedar, Walnut https://tangentmaterials.com/resource-type/color-swatches/
SNB-CXL-IPE	CampusXL with Ipe Wood tabletop and benches	1450 lbs	<ul style="list-style-type: none"> • Canopy height (high side): 8'3 1/2" • Canopy head clearance height (low side): 6'11 3/4" • Bench seat (1): 4'6" W x 1'21/2" L • Bench footprint (1): 4'6" W x 1'0" L • Table top: 4'6" W x 3'6" L • Table footprint (with benches): 4'6" W x 7'0" L • Canopy: 6'7" W x 11'0" L 	

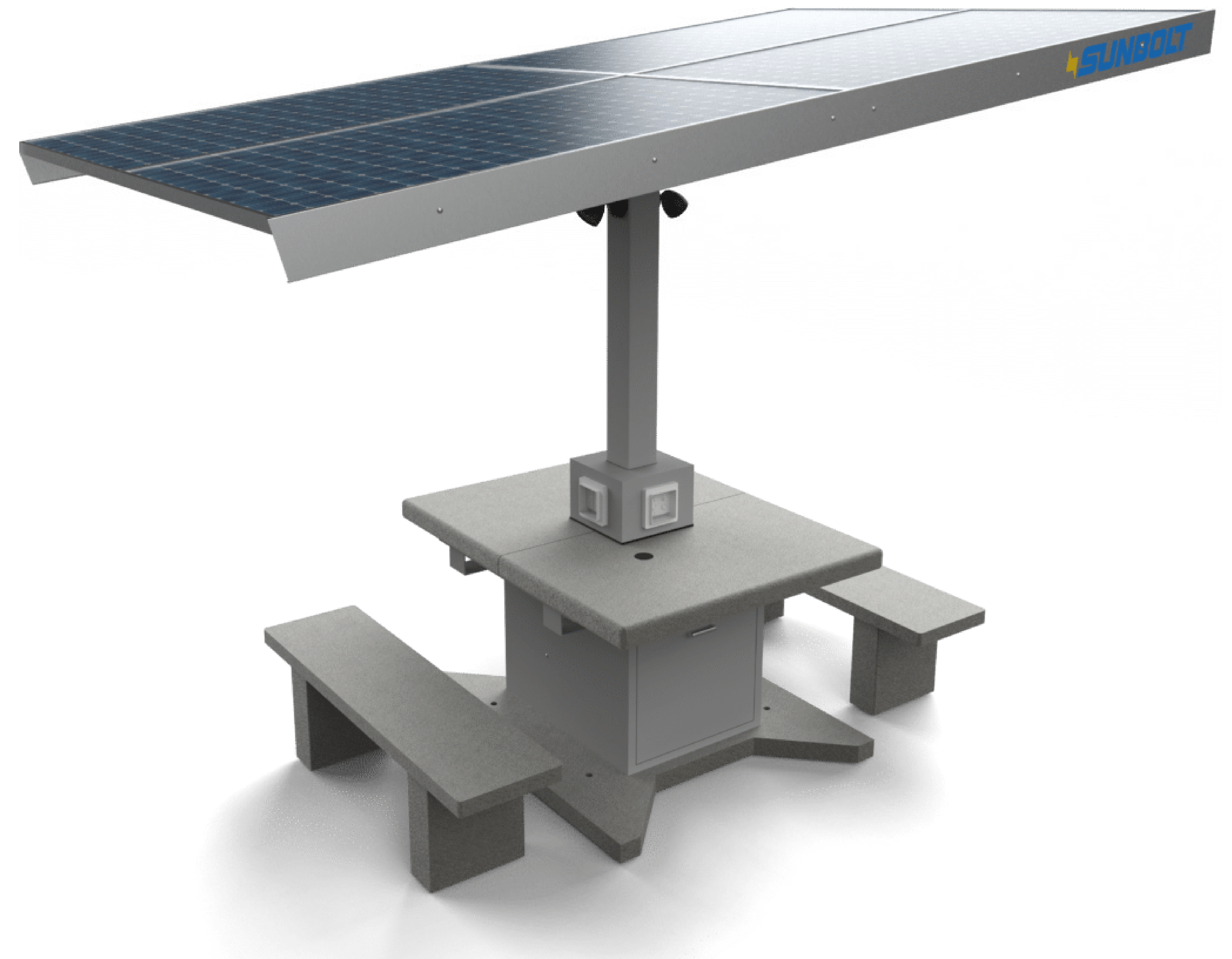


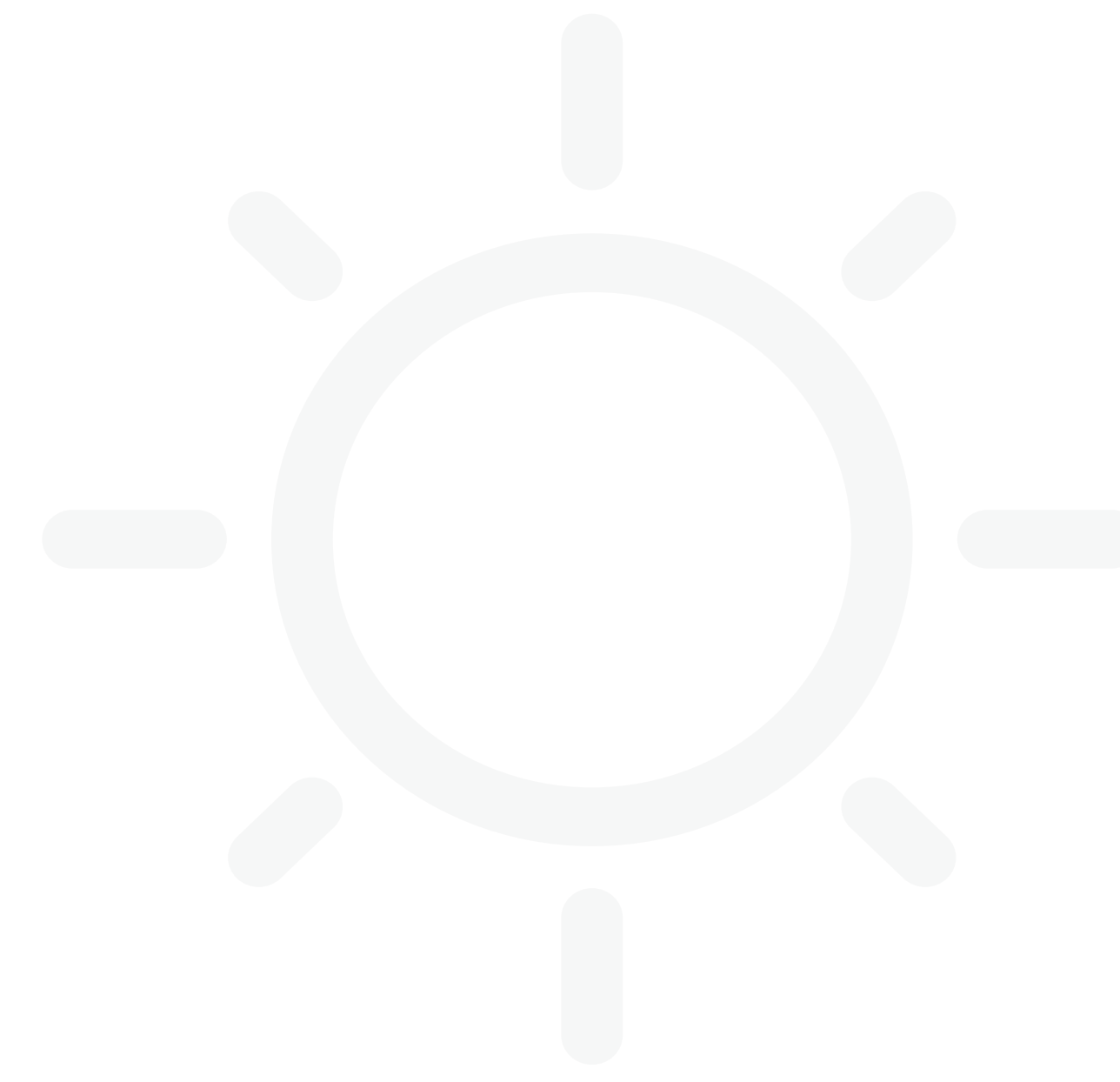
Momentum®

The Momentum has a sleek, modern aesthetic and architectural cast concrete design, and was created to endure the most extreme weather conditions – up to a 160-mph wind rating.

SNB-MOM

160 MPH wind rating. Detached benches. Seats 2-4. ADA Accessible. Six 120V outlets and five dual port USB/USB-C outlets. Two Qi wireless chargers. Material is a smooth concrete for tabletops and benches. Four solar panel canopy. 1.3 kW Solar Array.





Velocity™

Increase your speed of productivity with the Velocity solar workstation. This compact yet powerful hub sports a 170-mph wind rating while utilizing a range of eco-friendly materials, keeping in line with all Sunbolt products.

SNB-VEL

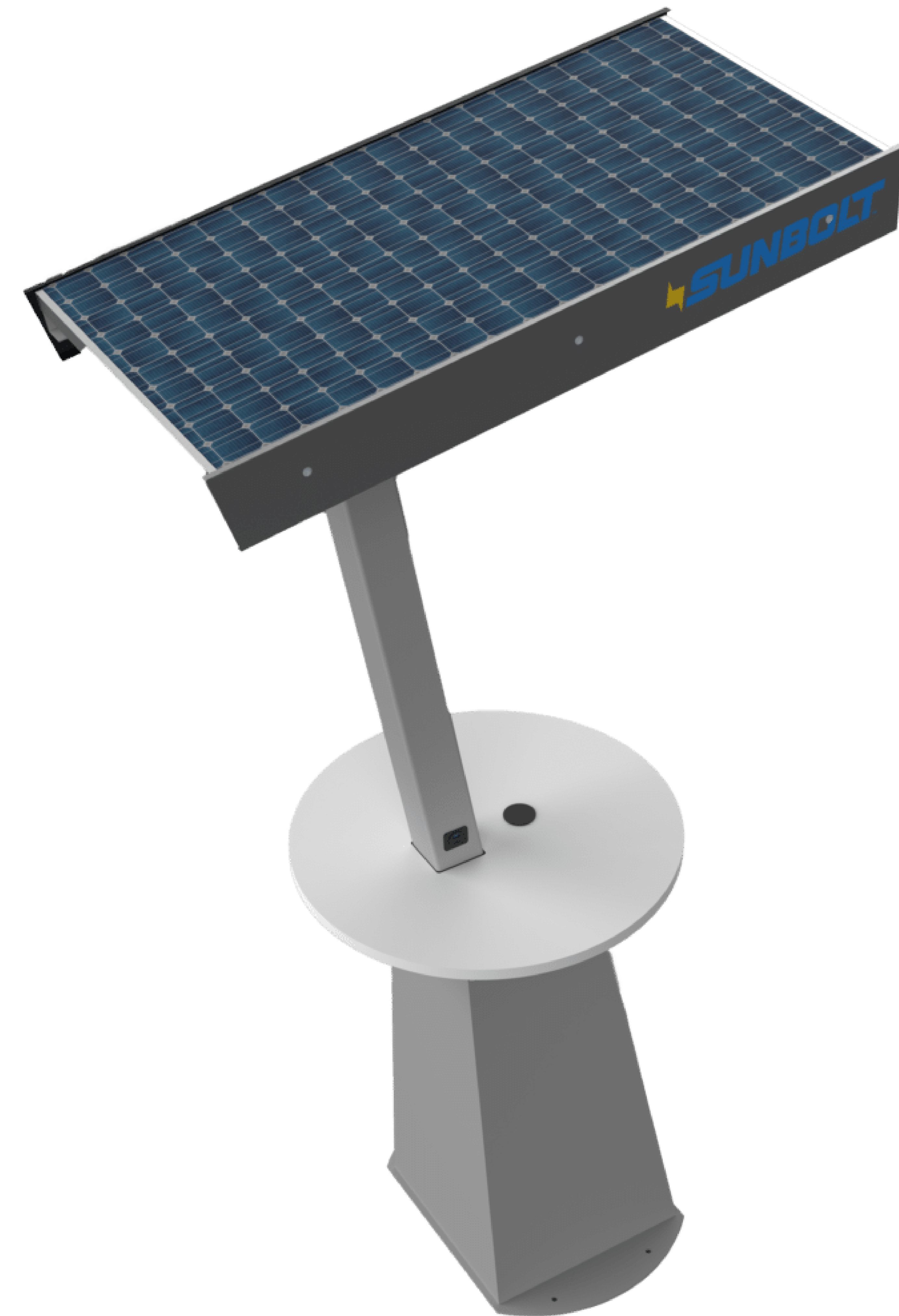
170 MPH wind rating. Detached benches. Seats 2-4. ADA Accessible. Four 120V outlets and four dual port USB/USB-C outlets. Two Qi wireless chargers. Material is Recycled Plastic Lumber for tabletops and benches. Two solar panel canopy. 660 Watt Solar Array.

Dash[™]

The Dash is a stand-up solar charging station suitable for anywhere on campus. It can be fully customized with logos and branding.

SNB-DASH

30" marine-grade polymer top. Four dual-port USB/USB-C outlets. ADA Accessible. Powder coated structural steel. Can be wrapped for branding. 150W solar array.





Solar Carousels

Solar Carousels are attractive table, seating, and parasol units that have an integrated system for charging smartphones, tablets, and other mobile devices. They complement a wide range of landscapes and architectural designs and provide continuous electronic device charging even during extended power outages.

Pavilion Carousel

Perforated metal seating. Flat or backed seats. Solid stainless steel table. Round table seats 3-6. Square table seats 3-4.

Model Number	Model Description
SNB-PPM-RD-3B	<i>Carousel Table/Chair system with Solar Parasol; 48" Round Table; 3 Punched Aluminum Backed Chairs; Powder Coat Finish</i>
SNB-PPM-RD-3B-ADA	<i>Carousel Table/Chair system with Solar Parasol; 48" Round Table; 3 Punched Aluminum Backed Chairs; Powder Coat Finish; ADA Accessible</i>
SNB-PPM-RD-4B	<i>Carousel Table/Chair system with Solar Parasol; 48" Round Table; 4 Punched Aluminum Backed Chairs; Powder Coat Finish</i>
SNB-PPM-RD-4B-ADA	<i>Carousel Table/Chair system with Solar Parasol; 48" Round Table; 4 Punched Aluminum Backed Chairs; Powder Coat Finish; ADA Accessible</i>
SNB-PPM-RD-5B	<i>Carousel Table/Chair system with Solar Parasol; 48" Round Table; 5 Punched Aluminum Backed Chairs; Powder Coat Finish</i>
SNB-PPM-RD-5B-ADA	<i>Carousel Table/Chair system with Solar Parasol; 48" Round Table; 5 Punched Aluminum Backed Chairs; Powder Coat Finish; ADA Accessible</i>
SNB-PPM-RD-6B	<i>Carousel Table/Chair system with Solar Parasol; 48" Round Table; 6 Punched Aluminum Backed Chairs; Powder Coat Finish</i>
SNB-PPM-RD-3F	<i>Carousel Table/Chair system with Solar Parasol; 48" Round Table; 3 Punched Aluminum Backless Chairs; Powder Coat Finish</i>
SNB-PPM-RD-3F-ADA	<i>Carousel Table/Chair system with Solar Parasol; 48" Round Table; 3 Punched Aluminum Backless Chairs; Powder Coat Finish; ADA Accessible</i>
SNB-PPM-RD-4F	<i>Carousel Table/Chair system with Solar Parasol; 48" Round Table; 4 Punched Aluminum Backless Chairs; Powder Coat Finish</i>
SNB-PPM-RD-4F-ADA	<i>Carousel Table/Chair system with Solar Parasol; 48" Round Table; 4 Punched Aluminum Backless Chairs; Powder Coat Finish; ADA Accessible</i>
SNB-PPM-RD-5F	<i>Carousel Table/Chair system with Solar Parasol; 48" Round Table; 5 Punched Aluminum Backless Chairs; Powder Coat Finish</i>
SNB-PPM-RD-5F-ADA	<i>Carousel Table/Chair system with Solar Parasol; 48" Round Table; 5 Punched Aluminum Backless Chairs; Powder Coat Finish; ADA Accessible</i>
SNB-PPM-RD-6F	<i>Carousel Table/Chair system with Solar Parasol; 48" Round Table; 6 Punched Aluminum Backless Chairs; Powder Coat Finish</i>



SNB-PPM-SQ-3B	<i>Carousel Table/Chair system with Solar Parasol; 48" Square Table; 3 Punched Aluminum Backed Chairs; Powder Coat Finish</i>
SNB-PPM-SQ-4B	<i>Carousel Table/Chair system with Solar Parasol; 48" Square Table; 4 Punched Aluminum Backed Chairs; Powder Coat Finish</i>
SNB-PPM-SQ-3F	<i>Carousel Table/Chair system with Solar Parasol; 48" Square Table; 3 Punched Aluminum Backless Chairs; Powder Coat Finish</i>
SNB-PPM-SQ-4F	<i>Carousel Table/Chair system with Solar Parasol; 48" Square Table; 4 Punched Aluminum Backless Chairs; Powder Coat Finish</i>

Marquee Carousel

Vertical strap seating. Flat or backed seats. Solid stainless steel table. Round table seats 3-6. Square table seats 3-4.



SNB-MCV-SQ-4B	Carousel Table/Chair system with Solar Parasol; 48" Square Table; 4 Strap Metal Backed Chairs; Powder Coat Finish
SNB-MCV-SQ-3F	Carousel Table/Chair system with Solar Parasol; 48" Square Table; 3 Strap Metal Backless Chairs; Powder Coat Finish
SNB-MCV-SQ-4F	Carousel Table/Chair system with Solar Parasol; 48" Square Table; 4 Strap Metal Backless Chairs; Powder Coat Finish

Model Number	Model Description
SNB-MCV-RD-3B	Carousel Table/Chair system with Solar Parasol; 48" Round Table; 3 Strap Metal Backed Chairs; Powder Coat Finish
SNB-MCV-RD-3B-ADA	Carousel Table/Chair system with Solar Parasol; 48" Round Table; 3 Strap Metal Backed Chairs; Powder Coat Finish; ADA Accessible
SNB-MCV-RD-4B	Carousel Table/Chair system with Solar Parasol; 48" Round Table; 4 Strap Metal Backed Chairs; Powder Coat Finish
SNB-MCV-RD-4B-ADA	Carousel Table/Chair system with Solar Parasol; 48" Round Table; 4 Strap Metal Backed Chairs; Powder Coat Finish; ADA Accessible
SNB-MCV-RD-5B	Carousel Table/Chair system with Solar Parasol; 48" Round Table; 5 Strap Metal Backed Chairs; Powder Coat Finish
SNB-MCV-RD-5B-ADA	Carousel Table/Chair system with Solar Parasol; 48" Round Table; 5 Strap Metal Backed Chairs; Powder Coat Finish; ADA Accessible
SNB-MCV-RD-6B	Carousel Table/Chair system with Solar Parasol; 48" Round Table; 6 Strap Metal Backed Chairs; Powder Coat Finish
SNB-MCV-RD-3F	Carousel Table/Chair system with Solar Parasol; 48" Round Table; 3 Strap Metal Backless Chairs; Powder Coat Finish
SNB-MCV-RD-3F-ADA	Carousel Table/Chair system with Solar Parasol; 48" Round Table; 3 Strap Metal Backless Chairs; Powder Coat Finish; ADA Accessible
SNB-MCV-RD-4F	Carousel Table/Chair system with Solar Parasol; 48" Round Table; 4 Strap Metal Backless Chairs; Powder Coat Finish
SNB-MCV-RD-4F-ADA	Carousel Table/Chair system with Solar Parasol; 48" Round Table; 4 Strap Metal Backless Chairs; Powder Coat Finish; ADA Accessible
SNB-MCV-RD-5F	Carousel Table/Chair system with Solar Parasol; 48" Round Table; 5 Strap Metal Backless Chairs; Powder Coat Finish
SNB-MCV-RD-5F-ADA	Carousel Table/Chair system with Solar Parasol; 48" Round Table; 5 Strap Metal Backless Chairs; Powder Coat Finish; ADA Accessible
SNB-MCV-RD-6F	Carousel Table/Chair system with Solar Parasol; 48" Round Table; 6 Strap Metal Backless Chairs; Powder Coat Finish
SNB-MCV-SQ-3B	Carousel Table/Chair system with Solar Parasol; 48" Square Table; 3 Strap Metal Backed Chairs; Powder Coat Finish

Arbor Carousel

Arbor tables are perfect for parks and other natural settings. Choose from recycled plastic lumber or Ipe wood seating and multiple table options. Carousel tables have a freestanding mount.

Model Number	Model Description
ARV-RD-3B-IPE	48" Round Stainless Steel Table; 3 Ipe Wood Backed Chairs; Powder Coat Finish
ARV-RD-3B-IPE-ADA	48" Round Stainless Steel Table; 3 Ipe Wood Backed Chairs; Powder Coat Finish; ADA Accessible
ARV-RD-4B-IPE	48" Round Stainless Steel Table; 4 Ipe Wood Backed Chairs; Powder Coat Finish
ARV-RD-4B-IPE-ADA	48" Round Stainless Steel Table; 4 Ipe Wood Backed Chairs; Powder Coat Finish; ADA Accessible
ARV-RD-5B-IPE	48" Round Stainless Steel Table; 5 Ipe Wood Backed Chairs; Powder Coat Finish
ARV-RD-5B-IPE-ADA	48" Round Stainless Steel Table; 5 Ipe Wood Backed Chairs; Powder Coat Finish; ADA Accessible
ARV-RD-6B-IPE	48" Round Stainless Steel Table; 6 Ipe Wood Backed Chairs; Powder Coat Finish
ARV-RD-3F-IPE	48" Round Stainless Steel Table; 3 Ipe Wood Backless Chairs; Powder Coat Finish
ARV-RD-3F-IPE-ADA	48" Round Stainless Steel Table; 3 Ipe Wood Backless Chairs; Powder Coat Finish; ADA Accessible
ARV-RD-4F-IPE	48" Round Stainless Steel Table; 4 Ipe Wood Backless Chairs; Powder Coat Finish
ARV-RD-4F-IPE-ADA	48" Round Stainless Steel Table; 4 Ipe Wood Backless Chairs; Powder Coat Finish; ADA Accessible
ARV-RD-5F-IPE	48" Round Stainless Steel Table; 5 Ipe Wood Backless Chairs; Powder Coat Finish
ARV-RD-5F-IPE-ADA	48" Round Stainless Steel Table; 5 Ipe Wood Backless Chairs; Powder Coat Finish; ADA Accessible
ARV-RD-6F-IPE	48" Round Stainless Steel Table; 6 Ipe Wood Backless Chairs; Powder Coat Finish
ARV-RD-3B-RPL	48" Round Stainless Steel Table; 3 Recycled Plastic Lumber Backed Chairs; Powder Coat Finish
ARV-RD-3B-RPL-ADA	48" Round Stainless Steel Table; 3 Recycled Plastic Lumber Backed Chairs; Powder Coat Finish; ADA Accessible
ARV-RD-4B-RPL	48" Round Stainless Steel Table; 4 Recycled Plastic Lumber Backed Chairs; Powder Coat Finish
ARV-RD-4B-RPL-ADA	48" Round Stainless Steel Table; 4 Recycled Plastic Lumber Backed Chairs; Powder Coat Finish; ADA Accessible
ARV-RD-5B-RPL	48" Round Stainless Steel Table; 5 Recycled Plastic Lumber Backed Chairs; Powder Coat Finish
ARV-RD-5B-RPL-ADA	48" Round Stainless Steel Table; 5 Recycled Plastic Lumber Backed Chairs; Powder Coat Finish; ADA Accessible
ARV-RD-6B-RPL	48" Round Stainless Steel Table; 6 Recycled Plastic Lumber Backed Chairs; Powder Coat Finish
ARV-RD-3F-RPL	48" Round Stainless Steel Table; 3 Recycled Plastic Lumber Backless Chairs; Powder Coat Finish
ARV-RD-3F-RPL-ADA	48" Round Stainless Steel Table; 3 Recycled Plastic Lumber Backless Chairs; Powder Coat Finish; ADA Accessible

ARV-RD-4F-RPL	48" Round Stainless Steel Table; 4 Recycled Plastic Lumber Backless Chairs; Powder Coat Finish
ARV-RD-4F-RPL-ADA	48" Round Stainless Steel Table; 4 Recycled Plastic Lumber Backless Chairs; Powder Coat Finish; ADA Accessible
ARV-RD-5F-RPL	48" Round Stainless Steel Table; 5 Recycled Plastic Lumber Backless Chairs; Powder Coat Finish
ARV-RD-5F-RPL-ADA	48" Round Stainless Steel Table; 5 Recycled Plastic Lumber Backless Chairs; Powder Coat Finish; ADA Accessible
ARV-RD-6F-RPL	48" Round Stainless Steel Table; 6 Recycled Plastic Lumber Backless Chairs; Powder Coat Finish
ARV-SQ-3B-IPE	48" Square Ipe Wood Table; 3 Ipe Wood Backed Chairs; Powder Coat Finish
ARV-SQ-4B-IPE	48" Square Ipe Wood Table; 4 Ipe Wood Backed Chairs; Powder Coat Finish
ARV-SQ-3F-IPE	48" Square Ipe Wood Table; 3 Ipe Wood Backless Chairs; Powder Coat Finish
ARV-SQ-4F-IPE	48" Square Ipe Wood Table; 4 Ipe Wood Backless Chairs; Powder Coat Finish
ARV-SQ-3B-RPL	48" Square Recycled Plastic Lumber Table; 3 Recycled Plastic Lumber Backed Chairs; Powder Coat Finish
ARV-SQ-4B-RPL	48" Square Recycled Plastic Lumber Table; 4 Recycled Plastic Lumber Backed Chairs; Powder Coat Finish
ARV-SQ-3F-RPL	48" Square Recycled Plastic Lumber Table; 3 Recycled Plastic Lumber Backless Chairs; Powder Coat Finish
ARV-SQ-4F-RPL	48" Square Recycled Plastic Lumber Table; 4 Recycled Plastic Lumber Backless Chairs; Powder Coat Finish
ARV-SQ-S-3B-IPE	48" Square Steel Table; 3 Ipe Wood Backed Chairs; Powder Coat Finish
ARV-SQ-S-4B-IPE	48" Square Steel Table; 4 Ipe Wood Backed Chairs; Powder Coat Finish
ARV-SQ-S-3F-IPE	48" Square Steel Table; 3 Ipe Wood Backless Chairs; Powder Coat Finish
ARV-SQ-S-4F-IPE	48" Square Steel Table; 4 Ipe Wood Backless Chairs; Powder Coat Finish
ARV-SQ-S-3B-RPL	48" Square Steel Table; 3 Recycled Plastic Lumber Backed Chairs; Powder Coat Finish
ARV-SQ-S-4B-RPL	48" Square Steel Table; 4 Recycled Plastic Lumber Backed Chairs; Powder Coat Finish
ARV-SQ-S-3F-RPL	48" Square Steel Table; 3 Recycled Plastic Lumber Backless Chairs; Powder Coat Finish
ARV-SQ-S-4F-RPL	48" Square Steel Table; 4 Recycled Plastic Lumber Backless Chairs; Powder Coat Finish



Square Expanded Metal Table



Expanded Metal Table, 46" square table with attached benches. 11 1/2" wide seating.
Seats up to 8. Table can be surface mounted or in-ground.

Model Number	Model Description	Weight	Material
LCEM-SQ-PT	46" Square Table, Portable, Expanded Metal, 4 attached seats	265 lbs	Thermoplastic: Black, Red, Orange, Yellow, Green, Blue, Navy, Purple, Burgundy, Brown, Beige, Sandstone, Gray, Granite, Teal
LCEM-SQ-SM	46" Square Table, Surface Mount, Expanded Metal, 4 attached seats	270 lbs	Thermoplastic: Black, Red, Orange, Yellow, Green, Blue, Navy, Purple, Burgundy, Brown, Beige, Sandstone, Gray, Granite, Teal
LCEM-SQ-IG	46" Square Table, In-Ground, Expanded Metal, 4 attached seats	275 lbs	Thermoplastic: Black, Red, Orange, Yellow, Green, Blue, Navy, Purple, Burgundy, Brown, Beige, Sandstone, Gray, Granite, Teal

Round Expanded Metal Table



Expanded Metal Table, 46" round table with attached benches. 11 1/2" wide seating.
Seats up to 8. Table can be surface mounted or in-ground.

Model Number	Model Description	Weight	Material
LCEM-RD-PT	46" Round Table, Portable, Expanded Metal, 4 attached seats	255 lbs	Thermoplastic: Black, Red, Orange, Yellow, Green, Blue, Navy, Purple, Burgundy, Brown, Beige, Sandstone, Gray, Granite, Teal
LCEM-RD-SM	46" Round Table, Surface Mount, Expanded Metal, 4 attached seats	260 lbs	Thermoplastic: Black, Red, Orange, Yellow, Green, Blue, Navy, Purple, Burgundy, Brown, Beige, Sandstone, Gray, Granite, Teal
LCEM-RD-IG	46" Round Table, In-Ground, Expanded Metal, 4 attached seats	265 lbs	Thermoplastic: Black, Red, Orange, Yellow, Green, Blue, Navy, Purple, Burgundy, Brown, Beige, Sandstone, Gray, Granite, Teal

Square Perforated Steel Table



Perforated Steel Table, 46" square table with attached benches. 1/2" holes. Seats up to 8. Table can be surface mounted or in-ground.

Model Number	Model Description	Weight	Material
LCPER-SQ-PT	46" Square Table, Portable, Perforated, 4 attached seats	310 lbs	Thermoplastic: Black, Red, Orange, Yellow, Green, Blue, Navy, Purple, Burgundy, Brown, Beige, Sandstone, Gray, Granite, Teal
LCPER-SQ-SM	46" Square Table, Surface Mount, Perforated, 4 attached seats	315 lbs	Thermoplastic: Black, Red, Orange, Yellow, Green, Blue, Navy, Purple, Burgundy, Brown, Beige, Sandstone, Gray, Granite, Teal
LCPER-SQ-IG	46" Square Table, In-Ground, Perforated, 4 attached seats	320 lbs	Thermoplastic: Black, Red, Orange, Yellow, Green, Blue, Navy, Purple, Burgundy, Brown, Beige, Sandstone, Gray, Granite, Teal

Square Perforated Steel Table ADA



Perforated Steel Table, 46"x 58" table with 3 attached benches.

Model Number	Model Description	Weight
LCPER-SQ-PT-ADA	46" x 58" Table, Portable ADA, Perforated, 3 attached seats	320 lbs
LCPER-SQ-SM-ADA	46" x 58" Table, Surface Mount ADA, Perforated, 3 attached seats	325 lbs
LCPER-SQ-IG-ADA	46" x 58" Table, In-Ground ADA, Perforated, 3 attached seats	330 lbs



Round Perforated Steel Table

Perforated Steel Table, 46" round table with attached benches. 1/2" holes. Seats up to 8. Table can be surface mounted or in-ground.



LCPER-RD-PT	46" Round Table, Portable, Perforated, 4 attached seats	300 lbs
LCPER-RD-SM	46" Round Table, Surface Mount, Perforated, 4 attached seats	305 lbs
LCEM-PT4-SM	4' Surface Mount Picnic Table	165 lbs.



Picnic Tables

Picnic tables for parks and recreational areas. Weatherproof, thermoplastic coating.
Available in 3 mounting options.

Standard expanded metal picnic tables

Expanded metal. 12 foot length seats up to 12 people. 8 foot lengths are available in ADA.



Model Number	Model Description	Weight
LCEM-PT4-PT	4' Portable Picnic Table	160 lbs.
LCEM-PT4-SM	4' Surface Mount Picnic Table	165 lbs.
LCEM-PT4-IG	4' In-Ground Picnic Table	170 lbs.
LCEM-PT6-PT	6' Portable Picnic Table	210 lbs.
LCEM-PT6-SM	6' Surface Mount Picnic Table	215 lbs.
LCEM-PT6-IG	6' In-Ground Picnic Table	220 lbs.
LCEM-PT8-PT	8' Portable Picnic Table	280 lbs.
LCEM-PT8-SM	8' Surface Mount Picnic Table	285 lbs.
LCEM-PT8-IG	8' In-Ground Picnic Table	290 lbs.
LCEM-PT8-PT-ADA	8' Portable ADA Picnic Table	270 lbs.
LCEM-PT8-SM-ADA	8' Surface Mount ADA Picnic Table	275 lbs.
LCEM-PT10-PT	10' Portable Picnic Table	300 lbs.
LCEM-PT10-SM	10' Surface Mount Picnic Table	305 lbs.
LCEM-PT10-IG	10' In-Ground Picnic Table	310 lbs.
LCEM-PT12-PT	12' Portable Picnic Table	440 lbs.
LCEM-PT12-SM	12' Surface Mount Picnic Table	445 lbs.
LCEM-PT12-IG	12' In-Ground Picnic Table	450 lbs.

Standard perforated metal picnic tables

Perforated design with 1/2 " holes staggered a 1/2" on centers. 8 foot lengths are available in ADA.



Model Number	Model Description	Weight
LCPER-PT4-PT	4' Portable, Perforated Picnic Table	190 lbs.
LCPER-PT4-SM	4' Surface Mount, Perforated Picnic Table	195 lbs.
LCPER-PT4-IG	4' In-Ground, Perforated Picnic Table	200 lbs.
LCPER-PT6-PT	6' Portable, Perforated Picnic Table	280 lbs.
LCPER-PT6-SM	6' Surface Mount, Perforated Picnic Table	285 lbs.
LCPER-PT6-IG	6' In-Ground, Perforated Picnic Table	290 lbs.
LCPER-PT8-PT	8' Portable, Perforated Picnic Table	370 lbs.
LCPER-PT8-SM	8' Surface Mount, Perforated Picnic Table	375 lbs.
LCPER-PT8-IG	8' In-Ground, Perforated Picnic Table	380 lbs.
LCPER-PT8-PT-ADA	8' Portable ADA, Perforated Picnic Table	360 lbs.
LCPER-PT8-SM-ADA	8' Surface Mount ADA, Perforated Picnic Table	360 lbs.
LCPER-PT10-PT	10' Portable, Perforated Picnic Table	450 lbs.
LCPER-PT10-SM	10' Surface Mount, Perforated Picnic Table	455 lbs.
LCPER-PT10-IG	10' In-Ground, Perforated Picnic Table	460 lbs.
LCPER-PT12-PT	12' Portable, Perforated Picnic Table	510 lbs.
LCPER-PT12-SM	12' Surface Mount, Perforated Picnic Table	515 lbs.
LCPER-PT12-IG	12' In-Ground, Perforated Picnic Table	520 lbs.



Plaza table with chairs

Diamond ground table and seating. Reinforced tabletop, seats and interlocking legs
form one unit.

Round plaza table



Round plaza table, seats 8.

Plaza table – ada



Perforated Steel Table, 46"x 58" table with 3 attached benches.

Model Number	Model Description	Weight	Dimensions
SNB-DT6-RD-140	Round plaza table, Standard		
SNB-DT6-RD-140-055	Round plaza table, Umbrella Coupler Option	1170 lbs.	40" diameter tabletop; 68" diameter x 30 1/2" H
SNB-DT6-RD-140-050	Round Plaza Table, Umbrella Holder Option	1170 lbs.	40" diameter tabletop; 68" diameter x 30 1/2" H
SNB-DT6-RD-140-060	Round Plaza Table, Checkerboard Option	1170 lbs.	40" diameter tabletop; 68" diameter x 30 1/2" H

Model Number	Model Description	Weight	Dimensions
SNB-DT6-114-ADA	Standard, ADA	1100 lbs.	40"x 49" diameter tabletop; 68" diameter x 30 1/2" H
SNB-DT6-114-055-ADA	Umbrella Coupler Option, ADA	1100 lbs.	40"x 49" diameter tabletop; 68" diameter x 30 1/2" H
SNB-DT6-114-050-ADA	Umbrella Holder Option, ADA	1100 lbs.	40"x 49" diameter tabletop; 68" diameter x 30 1/2" H
SNB-DT6-114-060-ADA	Checkerboard Option, ADA	1100 lbs.	40"x 49" diameter tabletop; 68" diameter x 30 1/2" H

Square plaza table



Square plaza table, seats 8.

Model Number	Model Description	Weight	Dimensions
SNB-DT6-SQ-140	Square plaza table, Standard	1212 lbs.	68" square x 30 1/2" H ; 40" square tabletop
SNB-DT6-SQ-140-055	Square plaza table, Umbrella Coupler Option	1212 lbs.	68" square x 30 1/2" H ; 40" square tabletop
SNB-DT6-SQ-140-050	Square plaza table, Umbrella Holder Option	1212 lbs.	68" square x 30 1/2" H ; 40" square tabletop
SNB-DT6-SQ-140-060	Square plaza table, Checkerboard Option	1212 lbs.	68" square x 30 1/2" H ; 40" square tabletop

Square plaza table – ada



Perforated Steel Table, 46"x 58" table with 3 attached benches.

Model Number	Model Description	Weight	Dimensions
SNB-DT6-SQ-214-ADA	Square plaza table, Standard, ADA	1150 lbs.	68" square x 30 1/2" H ; 40" x 49" square tabletop



Tables

Meza slat dining series

Dining table with umbrella hole. Aluminum slat, available in multiple finishes.
Accommodates umbrellas such as the Eclipse Solar Umbrella.



<i>Model Number</i>	<i>Model Description</i>	<i>Dimensions</i>
SNB-TC-M9682	Aluminum slat, rectangular bar table	82" x 42"

<i>Model Number</i>	<i>Model Description</i>	<i>Dimensions</i>
SNB-TC-M9636	36" Square Dining Umbrella Table with hole	36" x 36"



Model Number	Model Description	Dimensions
SNB-TC-M9642	42" Square Dining Umbrella Table with hole	42" x 42"

Model Number	Model Description	Dimensions
SNB-TC-M9648	48" Square Dining Umbrella Table with hole	48" x 48"



Benches

Lobby bench

Bench offered in recycled plastic lumber or Ipe Wood seating. Available in Exposed Aggregate and Sandblast Finishes.



Model Number	Model Description	Weight	Dimensions
SNB-DT6-LB-740	Concrete bench with 5 boards on seat. Legs are 19 1/2 W x6" Deep x17"H	338 lbs	40" L
SNB-DT6-LB-750	Concrete bench with 5 boards on seat. Legs are 19 1/2 W x6" Deep x17"H	372 lbs	60" L
SNB-DT6-LB-760	Concrete bench with 5 boards on seat. Legs are 19 1/2 W x6" Deep x17"H	534 lbs	72" L
SNB-DT6-LB-710	Concrete bench with 5 boards on seat. Legs are 19 1/2 W x6" Deep x17"H	588 lbs	120" L
SNB-DT6-LB-741	Concrete bench with 5 boards on seat. Legs are 19 1/2 W x6" Deep x17"H	334 lbs	40" L
SNB-DT6-LB-761	Concrete bench with 5 boards on seat. Legs are 19 1/2 W x6" Deep x17"H	514 lbs	72" L
SNB-DT6-LB-711	Concrete bench with 5 boards on seat. Legs are 19 1/2 W x6" Deep x17"H	710 lbs	120" L

Plaza bench

Concrete bench. One piece construction. Available in Exposed Aggregate and Sandblast Finishes. Diamond ground seat surface available.



Model Number	Model Description	Weight	Dimensions
SNB-DT6-PB-5300	Concrete bench. Seat with 45 degree chamfered edges top and bottom.	293 lbs	4" L
SNB-DT6-PB-5340	Concrete bench. Seat with 45 degree chamfered edges top and bottom.	310 lbs	48" L
SNB-DT6-PB-5350	Concrete bench. Seat with 45 degree chamfered edges top and bottom.	350 lbs	60" L
SNB-DT6-PB-5360	Concrete bench. Seat with 45 degree chamfered edges top and bottom.	390 lbs	72" L
SNB-DT6-PB-5370	Concrete bench. Seat with 45 degree chamfered edges top and bottom.	430 lbs	84" L

Roll formed diamond bench

Diamond benches delivering a classic style for any setting. Thermoplastic finish and pre-drilled mounting holes. 11 Gauge steel, cast iron legs 1 1/2" wide x 1 1/2" thick



Model Number	Model Description	Weight	Dimensions
LC-4-DB	4 Foot Diamond Pattern Bench	245 lbs.	4'
LC-6-DB	6 Foot Diamond Pattern Bench	265 lbs.	6'
LC-8-DB	8 Foot Diamond Pattern Bench	300 lbs.	8'

Armless roll formed diamond bench

Diamond pattern bench delivering a classic style with armless style.



Model Number	Model Description	Weight	Dimensions
LC-4-ADB	4 Foot Armless Diamond Pattern Bench	220 lbs.	4'
LC-6-ADB	6 Foot Armless Diamond Pattern Bench	250 lbs.	6'
LC-8-ADB	8 Foot Armless Diamond Pattern Bench	285 lbs.	8'

Roll formed perforated bench

Modern style, perforated bench with 16 colors to choose from.



Model Number	Model Description	Weight	Dimensions
LCPER-4-RFB	4 Foot Perforated Roll Formed Bench	245 lbs.	4'
LCPER-6-RFB	6 Foot Perforated Roll Formed Bench	285 lbs.	6'
LCPER-8-RFB	8 Foot Perforated Roll Formed Bench	320 lbs.	8'

HORIZONTAL BENCH

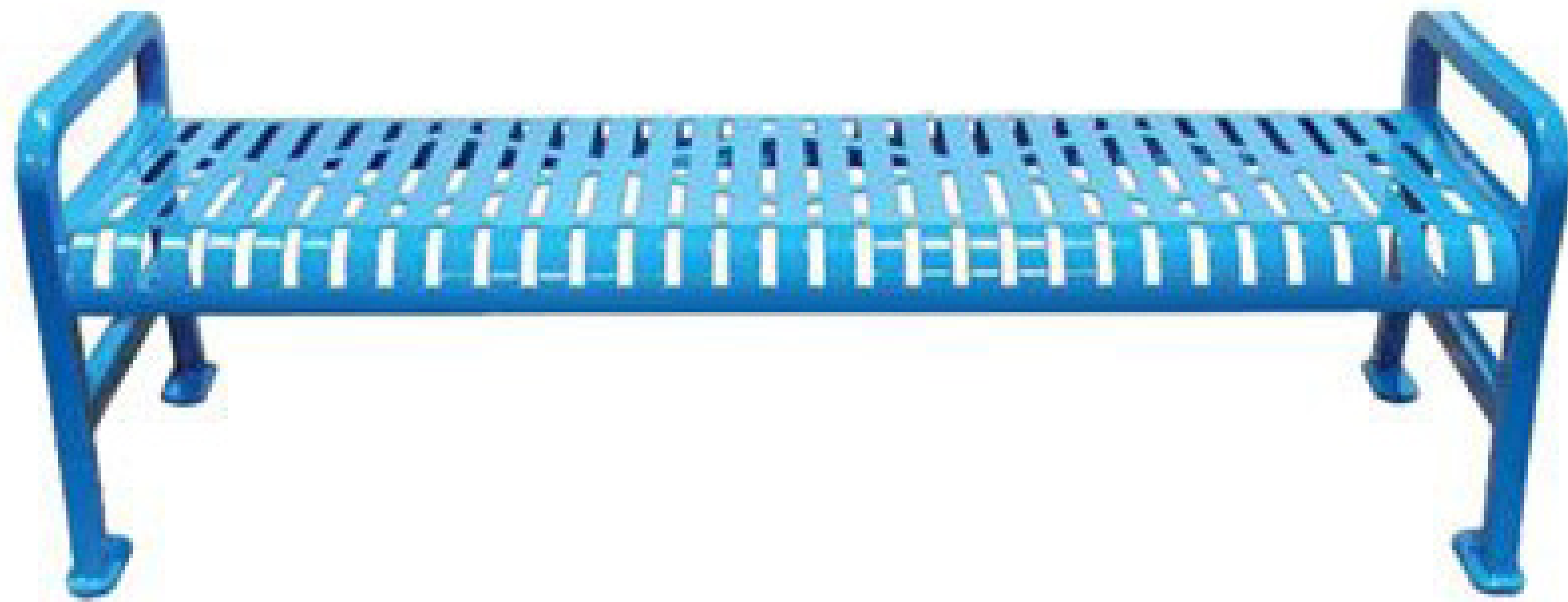
Horizontal slatted bench offering a sophisticated look for landscapes.



Model Number	Model Description	Weight	Dimensions
LC-4-HFB	4 Foot Horizontal Slatted Bench	235 lbs	4'
LC-6-HFB	6 Foot Horizontal Slatted Bench	255 lbs	6'
LC-8-HFB	8 Foot Horizontal Slatted Bench	290 lbs.	8'

Diamond bench without back

Diamond benches without backs. 22" wide seat in 4-6 foot lengths.



Model Number	Model Description	Weight	Dimensions
LC-4-DNB	4 Foot Backless Diamond Pattern Bench	140 lbs	4'
LC-6-DNB	5 Foot Backless Diamond Pattern Bench	150 lbs	5'
LC-8-DNB	6 Foot Backless Diamond Pattern Bench	160 lbs.	6'

U-leg perforated bench without back

U-leg style, perforated, backless bench. 3" steel pipe legs



Model Number	Model Description	Weight	Dimensions
LCPER-4-UNB	4 Foot Backless U-Leg Perforated Bench	110 lbs.	4'
LCPER-5-UNB	5 Foot Backless U-Leg Perforated Bench	120 lbs.	5'
LCPER-6-UNB	6 Foot Backless U-Leg Perforated Bench	130 lbs.	6'

Meza slatted bench

Portable, surface mountable, extruded aluminum frame and available in all frame finishes.



Model Number	Model Description	Dimensions
SNB-TC-M9665BE	Side bench, surface mount	18" x 65"



Model Number	Model Description	Dimensions
SNB-TC-M1042BE	Slat bench, straight two arms	18" x 65"



Bench Pads

Model Number	Model Description	Dimensions
SNB-TC-M1846BE	Meza side bench pads	18" x 65"

Marquee steel bar end bench



Benches in a vertical strap design. Steel bar ends. Delivered fully assembled, bolts directly to a concrete pad. Choose 6 or 8 foot length, backed bench. Wide range of Duracoat or powdercoat colors. Seat straps are 1 1/2" x 5/16". 1 5/16" support tubes at top and bottom.

Model Number	Model Description	Weight	Dimensions
MCV-1000-B	6 foot backed bench, steel bar end units	375 lbs.	26"x34"x72"
MCV-2000-B	8 foot backed bench, steel bar end units	475 lbs	26"x34"x96"

Marquee steel loop end bench



Benches in a vertical strap design. Looping steel bar ends. Delivered fully assembled, bolts directly to a concrete pad. Choose 6 or 8 foot length, backed bench. Wide range of Duracoat or powdercoat colors. Seat straps are 1 1/2" x 5/16". 1 5/16" support tubes at top and bottom.

Model Number	Model Description	Weight	Dimensions
MCV-1060-B	6 foot backed bench, steel loop ends	355 lbs.	26"x34"x72"
MCV-2060-B	8 foot backed bench, steel loop ends	455 lbs.	26"x34"x96"

Marquee arched back bench



Benches in a vertical strap design. Arched back and steel bar ends. Delivered fully assembled, bolts directly to a concrete pad. Choose 6 or 8 foot length, backed bench. Wide range of Duracoat or powdercoat colors. Seat straps are 1 1/2" x 5/16". 1 5/16" support tubes at top and bottom.

Model Number	Model Description	Weight	Dimensions
MCV-1200-B	6 foot arched backed bench, steel bar ends	400 lbs.	26"x 40 "x 72"
MCV-2200-B	8 foot arched backed bench, steel bar ends	450 lbs.	26"x 40"x96"

Marquee pedestal bench



Pedestal mounted bench with backs, in a vertical strap design. Can be surface or in-ground mounted. Seat straps are 1 1/2" x 5/16". 1 5/16" support tubes at top and bottom.

Model Number	Model Description	Weight	Dimensions
MCV-1020-B	6 foot, backed bench, surface mount	390 lbs	26"x34"x72"
MCV-1030-B	6 foot, backed bench, embedded mount	375 lbs.	26"x34"x72"
MCV-2020-B	8 foot, backed bench, surface mount	475 lbs	26"x34"x96"
MCV-2030-B	8 foot, backed bench, embedded mount	475 lbs	26"x34"x96"

Marquee backless bench



Vertical strap bench with steel bar ends and no back. Suitable for any environment. Seat straps are 1 1/2" x 5/16". 1 5/16" support tubes at top and bottom.

Model Number	Model Description	Weight	Dimensions
MCV-1100-B	6 foot, backless bench	345 lbs.	26"x34"x72"
MCV-2100-B	8 foot, backless bench	390 lbs.	26"x34"x96"

Marquee pedestal backless bench



Pedestal mounted bench with no back, in a vertical strap design. Can be surface or in-ground mounted. Seat straps are 1 1/2" x 5/16". 1 5/16" support tubes at top and bottom.

Model Number	Model Description	Weight	Dimensions
MCV-1120-B	6 foot backless bench, surface mount	345 lbs.	26"x34"x72"
MCV-1130-B	6 foot backless bench, embedded mount	345 lbs.	26"x34"x72"
MCV-2120-B	8 foot backless bench, surface mount	390 lbs.	26"x34"x96"
MCV-2130-B	8 foot backless bench, embedded mount	390 lbs.	26"x34"x96"

Arbor steel bar end bench



Benches with a steel bar end frame and an Ipe wood or recycled plastic slat seating surface. Choose 6 or 8 foot length, backed bench. Wide range of Duracoat or powdercoat colors. 1 5/16" support tubes at top and bottom. Zero or center arm rests.

Model Number	Model Description	Weight	Dimensions
ARV-1000-B	6 foot, backed bench	375 lbs.	26"x34"x72"
ARV-1001-B	6 foot, backed bench, center arm rest	385 lbs.	26"x34"x72"
ARV-2000-B	8 foot, backed bench	445 lbs.	26"x34"x96"
ARV-2001-B	8 foot, backed bench, center arm rest	455 lbs.	26"x34"x96"

Arbor steel loop end bench



Benches with Ipe wood or recycled plastic slat seating surface. Looping steel bar ends. Choose 6 or 8 foot length, backed bench. Wide range of Duracoat or powdercoat colors. Rounded bull nose offered in Ipe only. 1 5/16" support tubes at top and bottom. Zero or center arm rests.

Model Number	Model Description	Weight	Dimensions
ARV-1060-B	6 foot, backed bench	330 lbs.	26"x34"x72"
ARV-1061-B	6 foot, backed bench, center arm rest	350 lbs.	26"x34"x72"
ARV-2060-B	8 foot, backed bench	400 lbs.	26"x34"x96"
ARV-2061-B	8 foot, backed bench, center arm rest	420 lbs.	26"x34"x96"

Arbor pedestal bench

Pedestal mounted bench with backs, in an Ipe wood or recycled plastic slat seating surface. Can be surface or in-ground mounted. 1 5/16" support tubes at top and bottom.
Zero, center or end arm rests.



Model Number	Model Description	Weight	Dimensions
ARV-1020-B	6 foot, backed bench, surface mount	320 lbs.	26"x34"x72"
ARV-1021-B	6 foot, backed bench, surface mount, center arm rest	330 lbs.	26"x34"x72"
ARV-1022-B	6 foot, backed bench, surface mount, with end arm rests	340 lbs.	26"x34"x72"
ARV-1030-B	6 foot, backed bench, embedded mount	320 lbs.	26"x34"x72"
ARV-1031-B	6 foot, backed bench, embedded mount, center arm rest	330 lbs.	26"x34"x72"
ARV-1032-B	6 foot, backed bench, embedded mount, with end arm rests	340 lbs.	26"x34"x72"
ARV-2020-B	8 foot, backed bench, surface mount	380 lbs.	26"x34"x96"
ARV-2021-B	8 foot, backed bench, surface mount, center arm rest	390 lbs.	26"x34"x96"
ARV-2022-B	8 foot, backed bench, surface mount, with end arm rests	400 lbs.	26"x34"x96"
ARV-2030-B	8 foot, backed bench, embedded mount	380 lbs.	26"x34"x96"
ARV-2031-B	8 foot, backed bench, embedded mount, center arm rest	390 lbs.	26"x34"x96"
ARV-2032-B	8 foot, backed bench, embedded mount, with end arm rests	400 lbs.	26"x34"x96"

Arbor backless bench

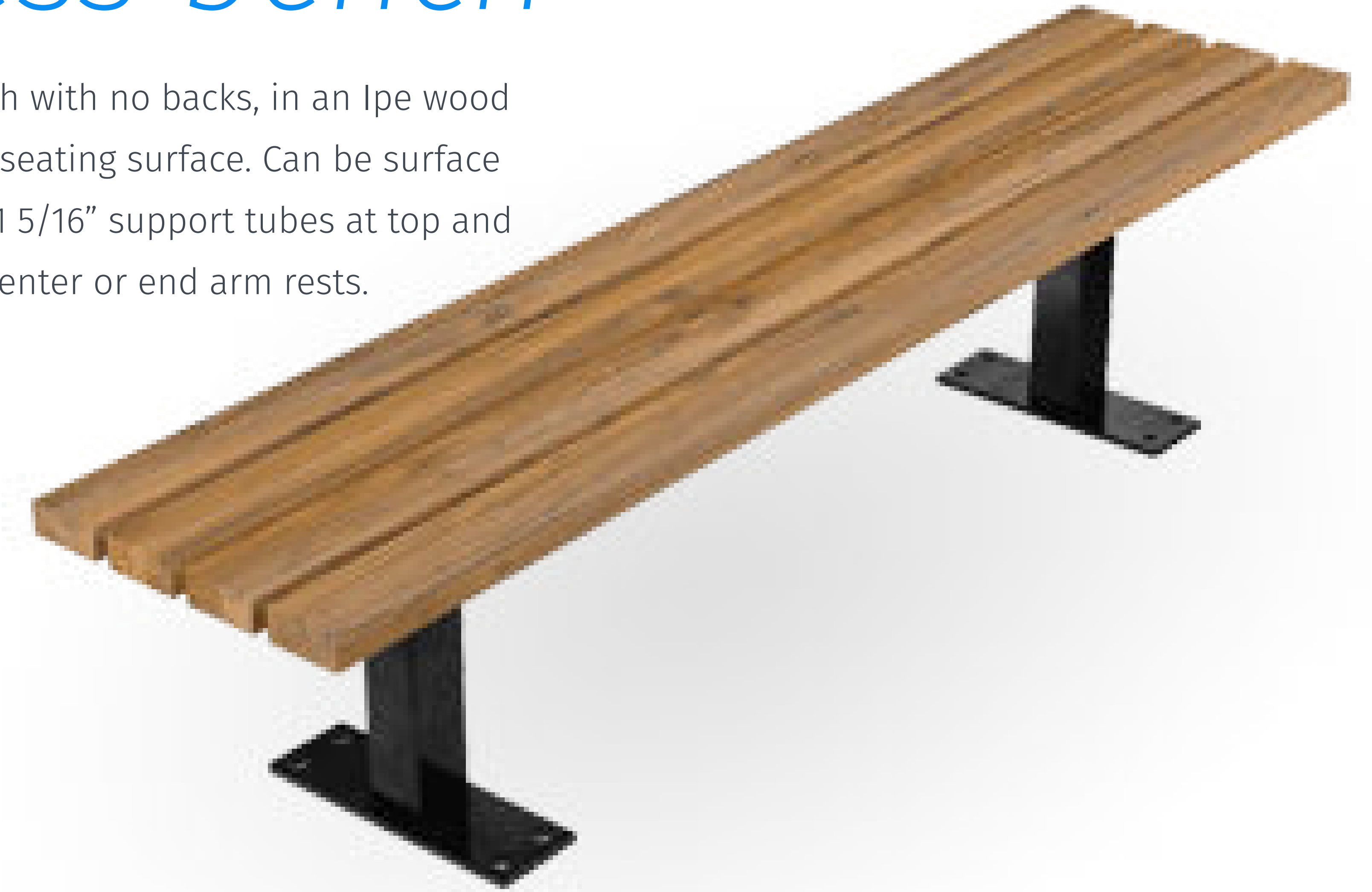
Backless bench in an Ipe wood or recycled plastic slat seating surface. Can be surface or in-ground mounted. 1 5/16" support tubes at top and bottom. Zero or center arm rests.



Model Number	Model Description	Weight	Dimensions
ARV-1100-B	6 foot, backed bench	305 lbs.	26"x24"x72"
ARV-1101-B	6 foot, backed bench, center arm rest	315 lbs.	26"x24"x72"
ARV-2100-B	8 foot, backed bench	355 lbs.	26"x24"x96"
ARV-2101-B	8 foot, backed bench, center arm rest	365 lbs.	26"x24"x96"

Arbor pedestal backless bench

Pedestal mounted bench with no backs, in an Ipe wood or recycled plastic slat seating surface. Can be surface or in-ground mounted. 1 5/16" support tubes at top and bottom. Zero, center or end arm rests.



Model Number	Model Description	Weight	Dimensions
ARV-1120-B	6 foot, backless bench, surface mount	300 lbs.	26"x34"x72"
ARV-1121-B	6 foot, backless bench, surface mount, center arm rest	310 lbs.	26"x34"x72"
ARV-1122-B	6 foot, backless bench, surface mount, with end arm rests	320 lbs.	26"x34"x72"
ARV-1130-B	6 foot, backless bench, embedded mount	300 lbs.	26"x34"x72"
ARV-1131-B	6 foot, backless bench, embedded mount, center arm rest	310 lbs.	26"x34"x72"
ARV-1132-B	6 foot, backless bench, embedded mount, with end arm rests	320 lbs.	26"x34"x72"
ARV-2120-B	8 foot, backless bench, surface mount	330 lbs.	26"x34"x96"
ARV-2121-B	8 foot, backless bench, surface mount, center arm rest	340 lbs.	26"x34"x96"
ARV-2122-B	8 foot, backless bench, surface mount, with end arm rests	350 lbs.	26"x34"x96"
ARV-2130-B	8 foot, backless bench, embedded mount	330 lbs.	26"x34"x96"
ARV-2131-B	8 foot, backless bench, embedded mount, center arm rest	340 lbs.	26"x34"x96"
ARV-2132-B	8 foot, backless bench, embedded mount, with end arm rests	350 lbs.	26"x34"x96"



Waste receptacles

Easy emptying trash receptacles in a variety of options to suit all types of outdoor landscape.

Marquee side-door waste receptacles

The Marquee side-door receptacles are durable trash containers with vertical strap design. Offered in keyed or latch styles. Choose side door with latch or key; flat, dome, ash or covered top. Powdercoat or Duracoat finish. Vertical straps – 5/16" x 1 1/2" steel flat bar. Outside support strap is a 1/4" x 2" steel flat bar; 5/8" dia. solid steel round bar top ring; 5/16" x 1 1/2" stainless steel foot plates; 14 gallon spun steel lid; 12 gallon spun steel dome; 13 gallon. stainless steel ash pan; High Density Polyethylene liner with handles



Standard marquee lid options



Flat lid



Dome lid



Ash lid



Covered enclosure

Model Number	Model Description	Weight (Crate)	Weight (Box)	Dimensions
MCV-2100-W	36 gallon, flat top with latch	305 lbs.	265 lbs.	30" x 40"
MCV-2101-W	36 gallon, dome top with latch	310 lbs.	265 lbs.	30" x 45"
MCV-2102-W	36 gallon, ash top with latch	315 lbs.	265 lbs.	30" x 45"
MCV-2103-W	36 gallon, covered enclosure top with latch	315 lbs.	265 lbs.	30" x 45"

Marquee dome

Marquee contemporary vertical strap design with side entry access. Split liner. Customizable. 5/16 x 1 1/2 steel flat bar vertical straps. 3/8 x 7/8 steel flat open support bars. 1/4 x 2 steel bar support rings. 1/2 x 1 steel flat support bar. 5/16" x 1 1/2" stainless steel foot plates. 24" 12 gallon wall steel spun lid. High density polyethylene liner with handles. Choose 36 gallon or two 18 gallon split capacity. Side door with latch or keyed lock, powdercoat or Duracoat finish, and wide range of colors.



Model Number	Model Description	Weight (Crate)	Dimensions
MCV-2107-NCW	36 gallon, side door with latch	300 lbs	25" x 44"
MCV-2107R-NCW	2x18 gallon, side door with latch	305 lbs.	25" x 44"
MCV-2207-NCW	36 gallon, side door with lock	300 lbs.	25" x 44"
MCV-2207R-NCW	2x18 gallon, side door with lock	305 lbs.	25" x 44"

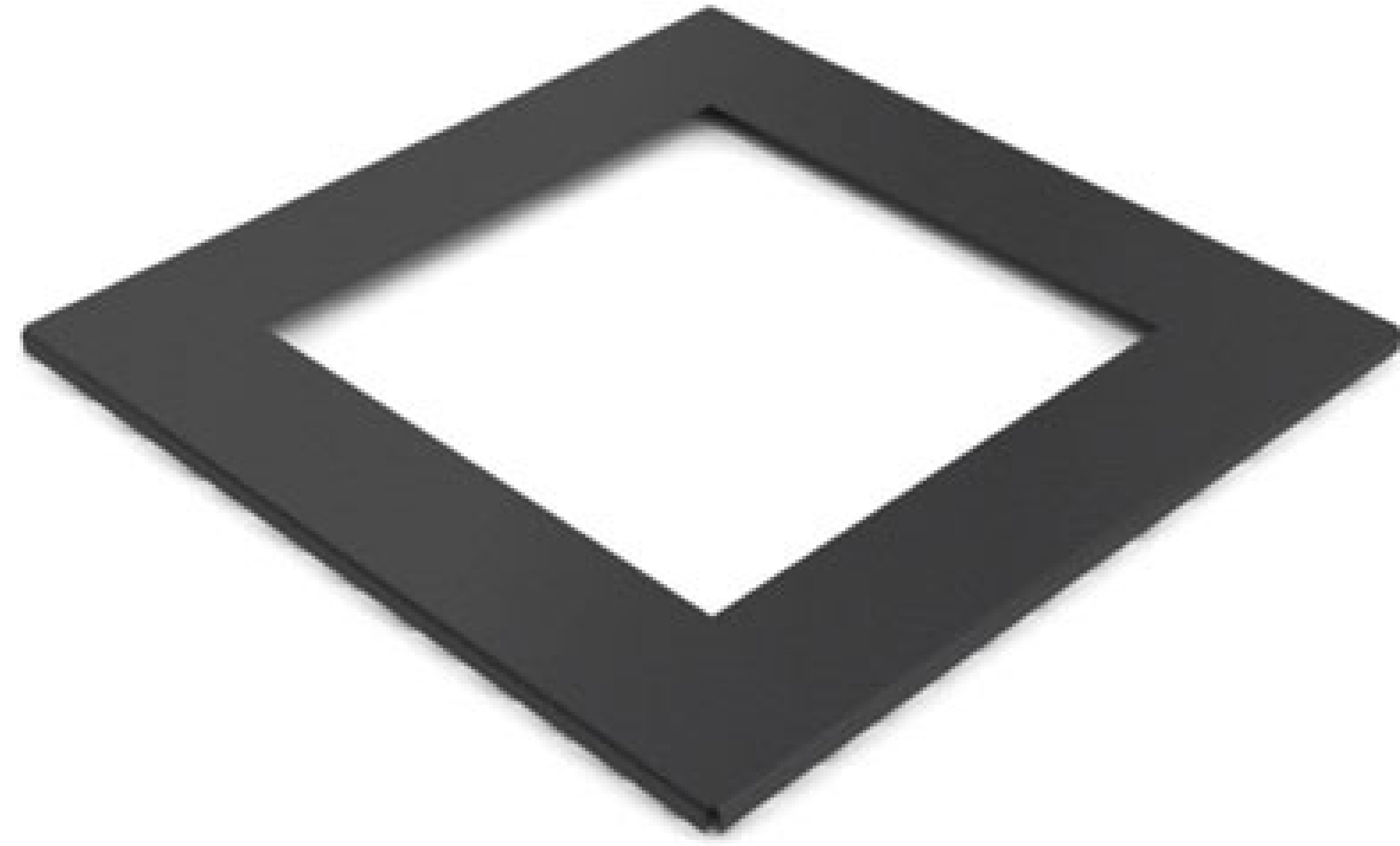
Sierra waste receptacles

The Sierra waste receptacle are a horizontal strap design with a side door and with or without a keyed latch. 1/4" x 1" horizontal strap steel flat bar. 5/16" x 3/4" steel flat bar support strap. 1" dia. Schedule 40 steel tubing for top support. 5/16" x 3/4" steel flat bottom support bar. 1" square steel flat side support bars. 5/16" x 1 1/2" stainless steel foot plates. /083 wall steel lid. 12 gallon spun steel dome. 13 gallon stainless steel ash pan. High density polyethylene liner with handles.



Model Number	Model Description	Weight (Crate)	Dimensions
SIE-2200-W	36 Gallon, Flat top with lock	300 lbs.	25"x34"x32"
SIE-2201-W	36 Gallon, Dome top with lock	305 lbs.	25"x41"x32"
SIE-2202-W	36 Gallon, Ash top with lock	310 lbs.	25"x41"x32"

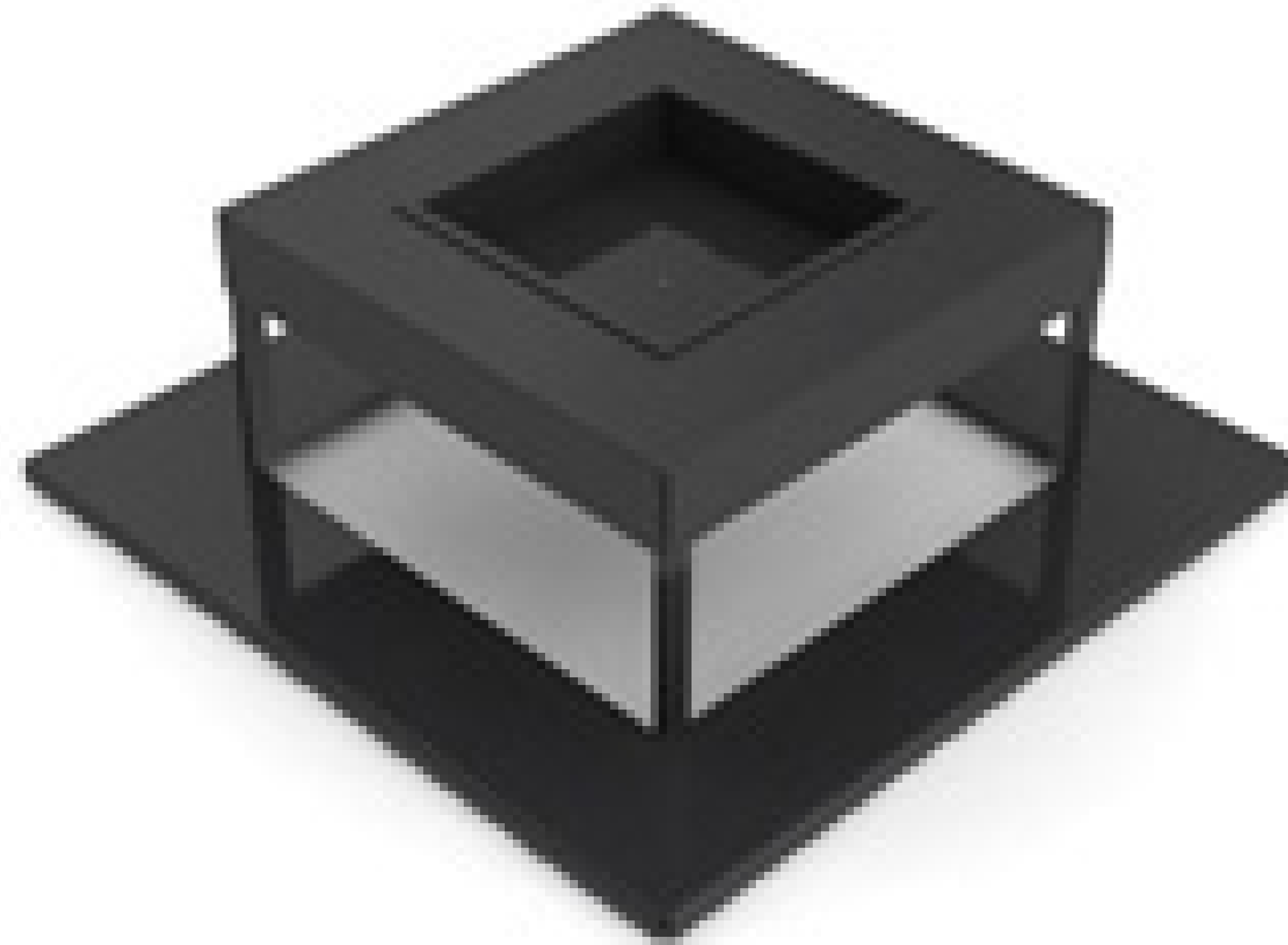
Standard sierra lid options



Flat lid



Dome lid



Ash lid

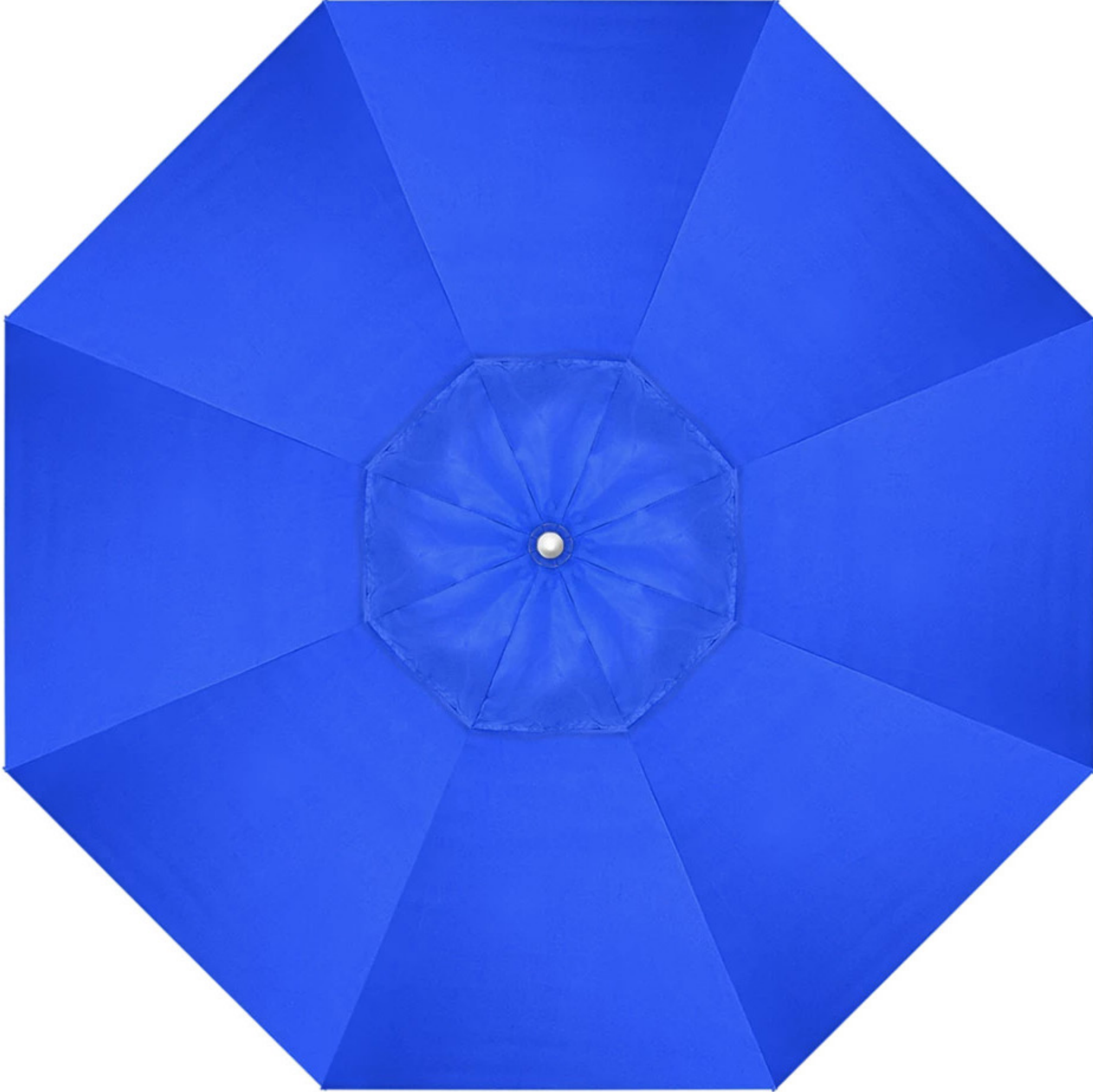


Umbrellas

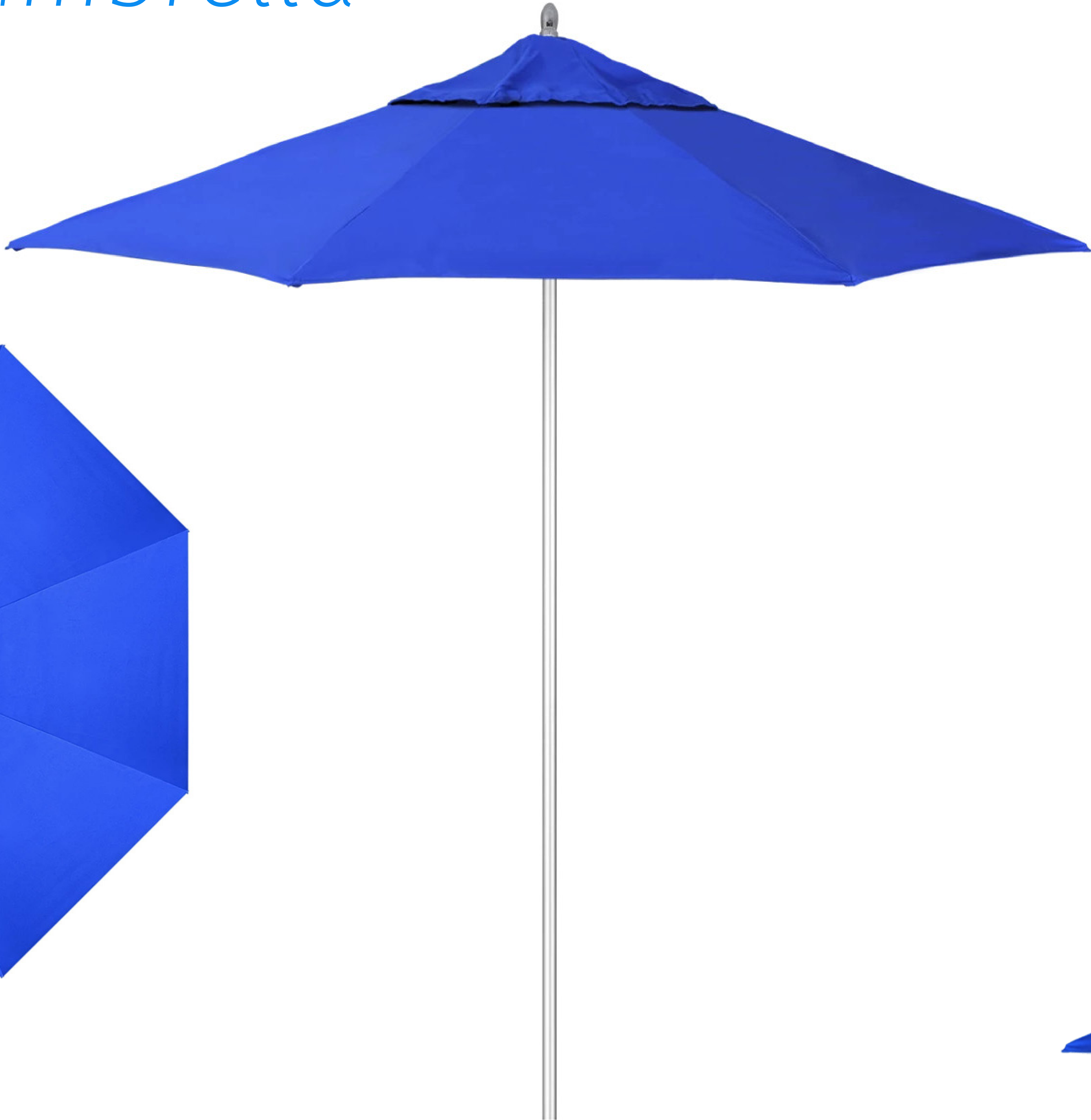
Umbrellas using awning-grade fabric.

Canvas umbrella

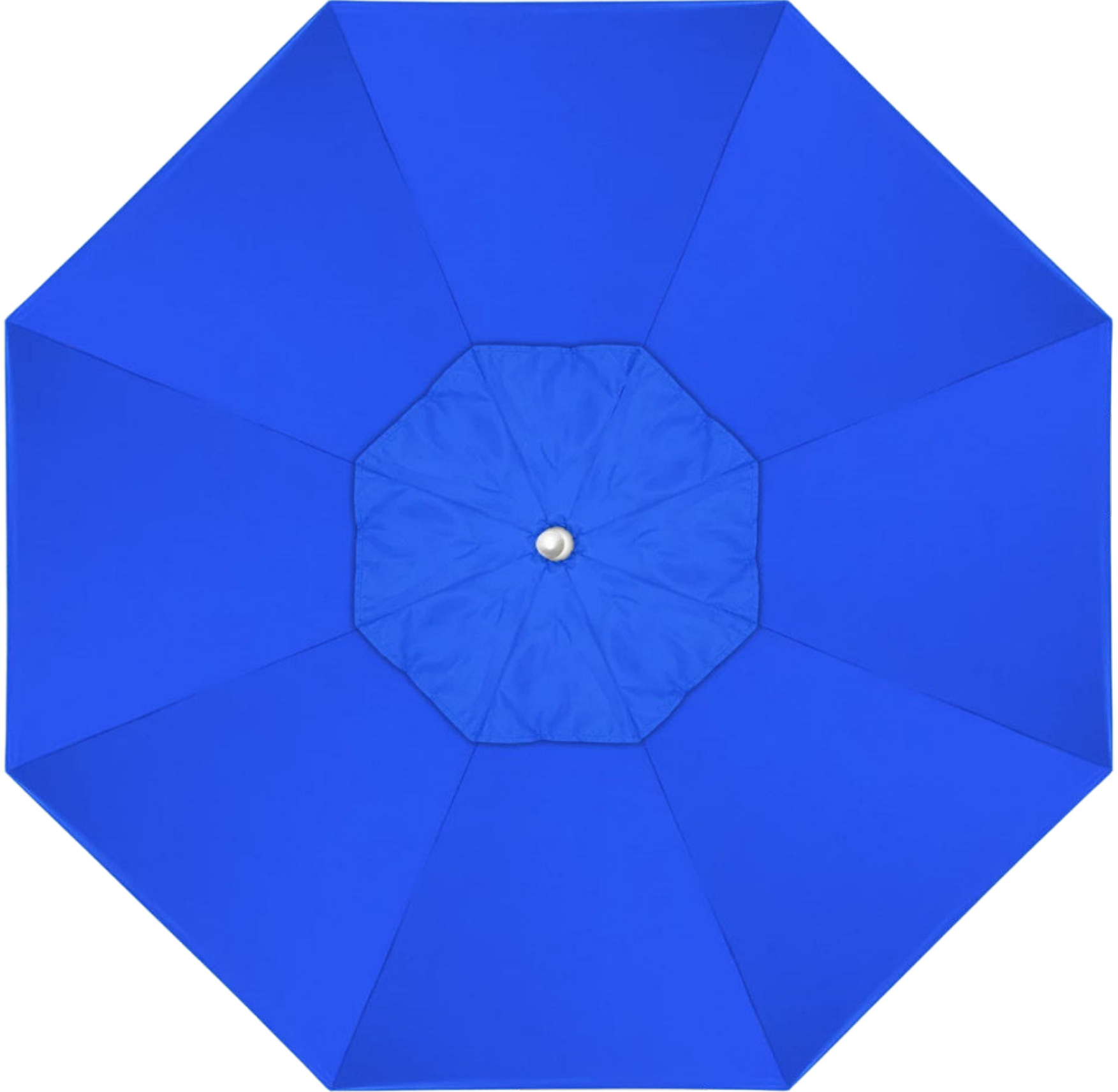
7.5' Octagonal



SNB-UMB-7



9' OCTAGONAL



SNB-UMB-9



11' OCTAGONAL



SNB-UMB-11



Newport Series



7.5' Square Umbrella with Fiberglass Ribs



7.5' Octagon Umbrella with Fiberglass Ribs

Model Number	Model Description	Weight	Dimensions
MP-604FG-UMB	<i>Commercial Umbrella. Stainless Steel Joints. Fiberglass ribs. 1.5" Aluminum Pole.</i>	20lbs	<i>104" Height. 84.625" Ground Clearance. 7.5'Canopy edge to edge.</i>

Model Number	Model Description	Weight	Dimensions
MP-908FG-UMB	<i>Commercial Umbrella. Stainless Steel Joints. Fiberglass ribs. 1.5" Aluminum Pole.</i>	20lbs	<i>104" Height. 84.625" Ground Clearance. 7.5'Canopy edge to edge.</i>

Newport Series



9' Octagon Umbrella with Fiberglass Ribs



11' Octagon Umbrella with Fiberglass Ribs

Model Number	Model Description	Weight	Dimensions
MP-728FG-UMB	<i>Commercial Umbrella. Stainless Steel Joints. Fiberglass ribs. 1.5" Aluminum Pole.</i>	21lbs	<i>104" Height. 82.625" Ground Clearance. 9' Canopy edge to edge.</i>

Model Number	Model Description	Weight	Dimensions
MP-118FG-UMB	<i>Commercial Umbrella. Stainless Steel Joints. Fiberglass ribs. 1.5" Aluminum Pole.</i>	24lbs	<i>104" Height. 82.625" Ground Clearance. 11' Canopy edge to edge.</i>

|

THANK YOU!

To learn more about Sunbolt and how we can benefit you and your business,
please contact us at:

Phone: 267-419-8496 | **Fax:** 215-565-2746

info@gosunbolt.com

gosunbolt.com

Follow us on social @GoSunbolt

725 County Line Road, Unit H
Huntingdon Valley, PA 19006

